



# Skytron

Lighting Guide



## Illuminating Healthcare

Skytron lights are designed to give healthcare professionals convenience and performance, allowing every case to be visualized in precise detail without unnecessary hassle. Featuring a diverse range of options, Skytron offers innovative lighting solutions for general and hybrid operating rooms, trauma bays, examination rooms and more.

### Maximize Performance

From controlling focus via a center handle to moving the spot with a hand-held wand, Skytron lighting options strive to remove complications and simplify the daily operations of healthcare professionals.

### More Applications

With models ranging from high-intensity surgical applications to easy to clean exam lighting, Skytron is a single-source provider. We outfit operating rooms, labor and delivery suites, emergency departments, intensive care units, and more.

### Long-Lasting Quality

All Skytron lights are built to be durable, long-lasting and economically conscious. Suspended LED design increases air flow resulting in cooler operating temperatures and longer life. Rely on Skytron to assure low cost of ownership throughout the light's long life cycle, backed by quality components, meticulous design and excellent service.



Maximize  
Performance



More  
Applications



Long-Lasting  
Quality



## Focus In on a Whole New Level of Performance

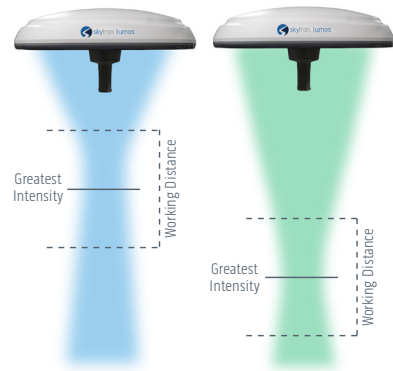
Skytron has led the industry in clinical lighting for decades, providing the most advanced features and technology available. From adjustable focus surgical lights to LED strobe-guided wands for recessed exam lighting, Skytron products simplify daily operation and streamline patient care.



### Surgical Lights with True Focus Adjustment

Extend the working distance and focal point of Skytron surgical lights easily with the center handle – without moving the lighthead or reducing surgeon head room.

Lumos • Aurora Four



### Precisely Tailored Illumination™

Bring crisp, deep-cavity illumination to any procedure with different spot sizes, color temperatures, and intensities.

Lumos • DoVera



### LED Strobe-Guided Exam Lights

Keep the light and caregiver focused on the patient with an LED strobe-guided positioning wand. Point the wand toward the targeted site and the light is repositioned automatically.

Lucina 4





## Lumos Surgical Light

### Putting the Surgical Team in Control of Focus & Illumination

The Lumos surgical light is the latest LED innovation to the Skytron lighting portfolio. This next-generation surgical light puts enhanced clarity and focus in the clinician's hand. Utilizing our best-in-class reflective LED technology, Lumos provides ideal illumination with optimal shadow control.

Lumos offers 60 different variations of light and 12 that produce 160,000 LUX. Lumos' personalized lighting enhances your ability to see what is important to you! 3 Spot Sizes, 4 Color Temps, 5 Adjustable Intensities equals Precisely Tailored Illumination.™

#### Drives Efficiency in:

- General operating rooms
- Hybrid and specialty operating rooms
- Outpatient surgery centers
- Catheterization labs
- C-section suites
- Emergency departments
- Intensive care units

#### Differentiating Features

- Crisp, deep-cavity illumination with three spot sizes
- Sixty combinations of spot size, color, and intensity
- By utilizing the ten presets, Lumos creates efficiency and lowers set-up time and frustration
- Control the focus from the sterile handle
- Intuitive flush-mounted wall control allows you to choose spot size, color temperature, intensity, and control the in-light surgical camera with a simple touch on the LCD screen



Personalized  
Lighting



Reflective LED  
Technology



Intuitive  
Control



## Aurora Four Surgical Light

### Focusable LED Surgical Light, Camera Ready, Selectable Color Temperature

The Aurora Four is designed to take unnecessary work out of complex surgical procedures. With focus control from the center handle and selectable color temperature, clinicians can quickly make adjustments tailored to surgeon preference or case.

Integration with Skytron booms, flat-screen displays and HD cameras makes the Aurora Four a versatile solution for surgical lighting.

#### Drives Efficiency in:

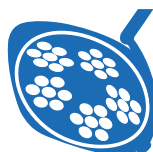
- General operating rooms
- Hybrid and specialty operating rooms
- Outpatient surgery centers
- Catheterization labs
- C-section suites
- Emergency departments
- Intensive care units

#### Differentiating Features

- Sterilizable center handle allows for control of intensity, focal point, and positioning
- Vertically segmented reflectors create a crisp, homogeneous spot and drastically reduce shadows
- Selectable color temperature of 4,100°K for soft white light, or 4,500°K for a bright, white light
- HD camera-ready for on-demand visuals
- 360° infinite rotation on all axes provides unmatched flexibility and positioning



Focus  
Control



24" or 30"  
Diameter



160,000 LUX



## DoVera Surgical Light

### LED Surgical Light, Dynamic Spot Size, Color Temperature, and Intensity

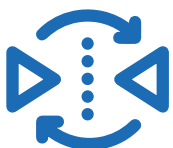
Suited for any surgical application, the DoVera DM520 provides superior illumination while eliminating glare. Innovative controls on the yoke provide quick personalization of spot size, color temperature, and intensity.

#### Drives Efficiency in:

- General operating rooms
- Hybrid and specialty operating rooms
- Outpatient surgery centers
- Catheterization labs
- C-section suites
- Emergency departments
- Intensive care units

#### Differentiating Features

- Personalized lighting control lets the user adjust spot size, color temperature, and intensity right on the yoke
- DoVera's unique Double Reflection Technology eliminates the discomfort of inadvertently looking directly into the light source
- A courtesy light is available to safely light darkened surgical suites
- Single or double yoke available to suit all positioning needs



Double  
reflection  
technology



21" Diameter



160,000 LUX



## Aurora Astro Procedure Light

### A Versatile Solution for Many Clinical Settings

Utilizing the same superior technology as Skytron's major surgical lights, the Aurora Astro provides optimal shadow control and depth perception.

Available in single or dual lighthead configurations and fully compatible with Skytron booms, the Aurora Astro is adaptable to many clinical settings.

#### Drives Efficiency in:

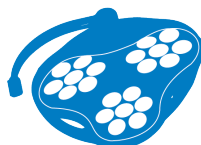
- Outpatient Surgery Centers
- Emergency Departments
- Trauma Centers
- C-Section Suites
- Labor and Delivery Suites
- Intensive Care Units
- Procedure Rooms

#### Differentiating Features

- Sterile center handle allows for control of intensity and positioning
- Vertically segmented reflectors create a crisp, homogeneous spot and drastically reduce shadows
- 360° infinite rotation on all axes permits unmatched flexibility and positioning
- Features 4 intensity control settings which can be adjusted from the center sterile handle or the non-sterile yoke control



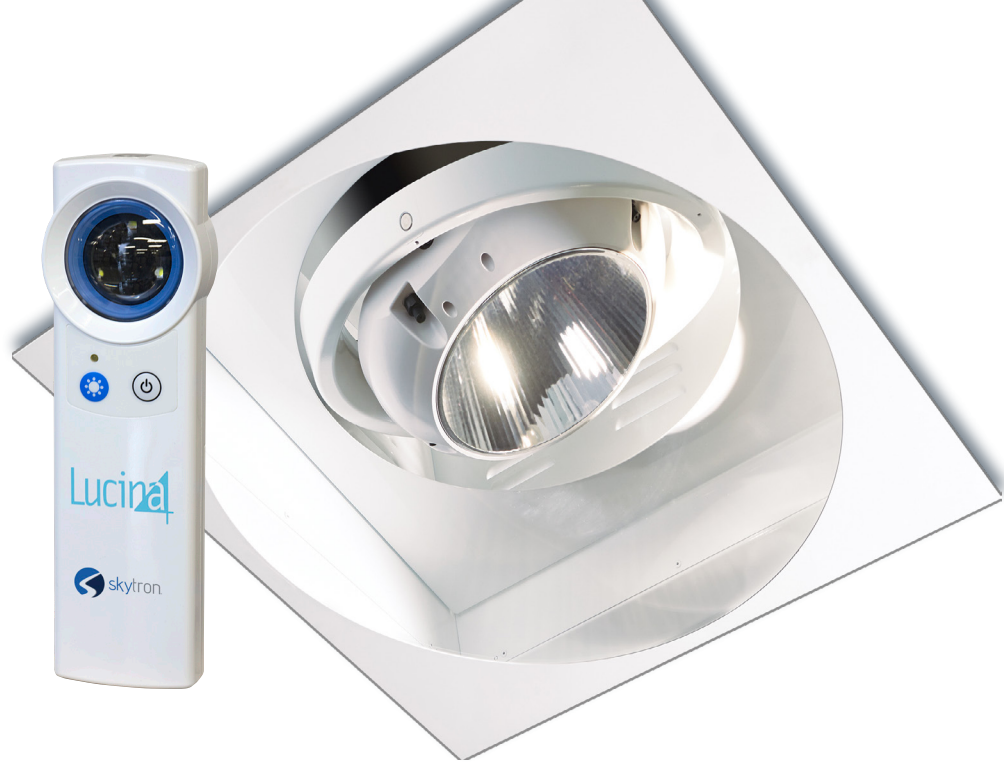
360° Rotation



17.5" Diameter



126,000 LUX



## Lucina 4 Specialty Light

### LED Exam Lighting, Recessed, Strobe-Guided

With industry exclusive LED strobe-guided technology, the Lucina 4 positioning wand ensures that the light and caregiver remain focused on the patient. Positioning the light is easy with the convenient wand – point toward the targeted location and the click of a button directs the spot.

#### Drives Efficiency in:

- Labor, delivery, recovery and postpartum suites
- Intensive care units
- Hybrid operating rooms
- Catheterization labs

#### Differentiating Features

- LED strobe-guided positioning wand directs the spot with a simple point and click
- Light beam can be angled up to 47° for superior illumination
- Wand controls positioning and on/off for up to six lights simultaneously
- Recessed 24" square fixture fits into existing ceiling grid and doesn't obstruct ceiling mounted equipment
- Non-intrusive design ensures clinical spaces remain comfortable and non-intimidating for patients



LED Strobe-  
Guided  
Accuracy



Fully  
Recessed  
Design



28,320 LUX





## Spectra Examination Light

### Exceptional Illumination with Great Contrast, No Glare, and Less Heat

The Spectra exam light brings the same brilliant illumination and performance expected in the OR to every general examination. Durable construction and a sealed, easy to clean lighthead make the Spectra ready for any healthcare environment.

#### Drives Efficiency in:

- Emergency departments
- Intensive care units
- Labor, delivery, recovery and postpartum suites
- Imaging departments
- General examination rooms

#### Differentiating Features

- Vertically segmented reflectors create a crisp, homogeneous spot and drastically reduce shadows
- 360° infinite rotation on all axes and 355° lighthead pitch for simple and efficient positioning
- Low profile design permits simple transport and storage
- 4,300°K color temperature provides brilliant, white light
- Available as ceiling, wall, mobile stand, or a boom mount



360° Rotation



12" Diameter



51,000 LUX



## DoVera DE12 Examination Light

### Enhance Your Performance with DoVera DE12

The DoVera DE12 examination light uses reflective LED technology to provide bright light in a shadow free environment. Utilizing 12 LEDs to evenly distribute light creates a consistent spot with very low heat output.

#### Drives Efficiency in:

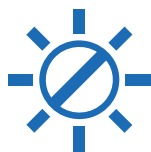
- General examination rooms
- Intensive care units
- Imaging departments
- Labor, delivery, recovery and postpartum suites
- Emergency departments

#### Differentiating Features

- Slim profile and lightweight material for ease of use and storage
- Simple and intuitive intensity controls at your fingertips
- Easy to use side handles for quick positioning
- Sterilizable handle for positioning control during procedures
- Color correct light provides accurate visibility



Durable Construction



Reduced Eye Glare



Comfortable  
Side Handles

## CleanView Disposable Handle Cover

- The intuitive design of CleanView allows for effortless and non-invasive user experiences for all clinical applications
- The flexible handle cover retains functionality of the intensity control button
- CleanView retains its sterility with single product packaging



B1-530-16

## Disposable Lighting Accessories



## Skytron Disposable Camera Cover

- The disposable covers are used over the camera and allow operating staff the ability to adjust the focus of the surgical light from within the sterile field
- Simple installation with snap-button engagement
- Skytron engineered to fit Aurora LED, Aurora AUR, Aurora AUA, and Aurora AUT series light fixtures



B1-715-65

# Skytron's Solutions



## Sterile Processing

Processing Sinks and Stainless Offerings  
Washers, Ultrasonics, and Cart Washers  
Prep & Pack Tables & Sterilizers



## Clinical

Surgical Tables  
Booms & Lights  
Full Offering of Stainless Products



## Architectural & Environmental

Modular Walls  
Configurable Window and Door Offerings  
Built-in Cabinetry



## Clinical Business Intelligence

Video Integration  
Asset Tracking & Supply Chain Solutions  
Surgical Displays

Skytron provides safe and efficient healthcare solutions delivered through a local representative network that values long-term relationships and comprehensive service.

Focused on providing the highest quality solutions while delivering the lowest cost of ownership, we prioritize transparency and accountability in our actions.

**To learn more, visit our website at [www.skytron.com](http://www.skytron.com)**



5085 Corporate Exchange Blvd. SE  
Grand Rapids, MI 49512  
1.800.SKYTRON (759-8766)  
email: [info@skytron.com](mailto:info@skytron.com)  
[www.skytron.com](http://www.skytron.com)



REV14 03-24  
PN L2-010-02