



# Skytron

Table Accessory Guide

# Table of Contents

From armboards to restraint straps, Skytron offers a full menu of accessories to outfit your Skytron surgical table. Each accessory offers full replacement part support and reliable performance that you can always count on. Our accessories are designed and tested to safely integrate with your Skytron table and provide reduced set up times. Browse our full Table Accessory Guide to view our extensive selection of support, general, and table control accessories.

## 1 Arm Support

- 1 Premium Armboard
- 1 Standard Armboard
- 1 Premium Locking Armboard
- 1 Radiolucent Armboard
- 2 Skytron X-Wide Armboard
- 2 Multi-Task Armboard
- 2 Raised Armboard
- 3 Pivoting Carbon Fiber Armboard
- 3 Carbon Fiber Armboard
- 4 Carbon Fiber Arm Surgery Board
- 4 Carter Arm Surgery Board
- 4 Traction Weights
- 5 Arm Support Matrix



## 6 Body Support

- 6 Beach Chair Shoulder Positioners
- 7 Side Extensions
- 8 Lower Back Section
- 8 Shoulder Support
- 8 Chest and Waist Support
- 9 Skytron Stacker Lateral Support
- 9 Prone Positioning Frame (Cloward Saddle)
- 10 Body Support Matrix



## 11 Leg Support

- 11 Heavy Duty Split Leg
- 11 Universal Split Leg
- 11 General Tilt Seat
- 12 Leg Support Matrix
- 13 Hyperlight Leg Section
- 13 Transfer Board
- 13 Transfer Board (Pin Type)
- 13 Transfer Board (Side Rail Type)
- 14 Versa Fit & Flex Fit 2 Stirrups
- 14 Levitator Stirrups (Regular and Heavy Duty)
- 14 Lithotomy Stirrups
- 16 Leg Support Positioners/Transfer Boards Matrix

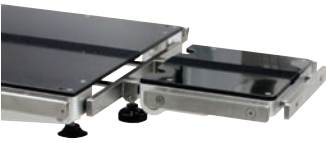


## 17 Urology

- 17 KUB Board
- 17 Urology Bracket Set
- 17 Urology Drain Trays



# Table of Contents



## 18 Head Support

- 18 Narrow Head Section
- 18 Neurology Adapter
- 18 General Purpose Head Support
- 19 Urology/Head Support Matrix

## 25 Table Pads

- 25 Welded Seam Pads



## 20 Clamps

- 20 Schure Socket
- 20 Skytron Stirrup Clamp
- 20 Universal Side Rail Clamp
- 20 EZ Grip Bar Clamp
- 20 Clamp-On Rail
- 20 Clamp-On Rail for Pediatric Extension
- 20 Tri-Clamp
- 20 Bar Clamp - Standard
- 20 Standard Bar Clamp

## 26 General Accessories

- 26 Anesthesia Screen "Wing" Type
- 26 Instrument Tray
- 26 Sterile Joystick Cover
- 27 OB Hand Grips
- 27 Disposable Face Mask
- 27 Head and Chip Strap
- 28 Accessory Carts
- 28 General Accessories Matrix



## 21 Extensions

- 21 Carbon Fiber Extension
- 21 Pediatric Extension
- 21 18" Foot Extension
- 22 Extensions/Clamps Matrix

## 29 Replacement Pendant Controls

- 29 3000 - 3600 Series
- 29 6000 - 6600 Series
- 30 GS70 Series



## 23 Straps

- 23 72" Nylon Restraint Belt
- 23 74" Patient Security Straps
- 24 96" Restraint Strap
- 24 105" Restraint Strap
- 24 75" Patient Safety Strap
- 24 65" Restraint Strap
- 24 90" Restraint Strap

## 31 Guardian Series Accs

- 31 44" Carbon Fiber Extension
- 31 Light Weight Leg Section
- 31 Guardian Series Camp
- 32 Kidney Ureter Bladder - KUB
- 32 Pediatric Extension
- 33 Split Leg
- 33 5" Side Extension
- 34 Beach Chair
- 35 Lower Back Section
- 35 Transfer Board
- 36 GS70 Table Pads Matrix



# Arm Support

Designed to handle extended amounts of wear and use, our cast aluminum armboard will continue to perform for years to come. The easy to find and use release handle will eliminate the need to bend and crouch. If you need the additional security of a locking handle, the Premium Locking Armboard adds a large rotating knob that will tightly lock the armboard to the side rail. This added security step will prevent any movement even at extreme table articulations.



Best Seller



Premium Armboard  
P/N 2-010-08



Standard Armboard  
P/N 2-010-07

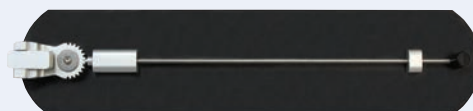
New Product



Premium Locking Armboard  
P/N 2-010-09

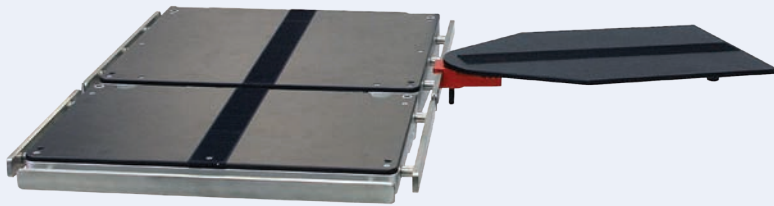


Radiolucent Armboard  
P/N 2-010-04

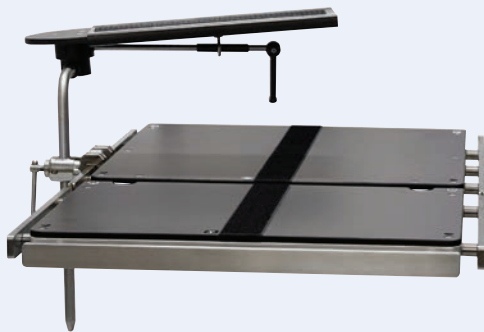


# Specialty Arm Support - Armboards

Save time by reducing the amount of armboard exchanging between cases with the versatile Multi-Task Armboard. This adaptable armboard is adaptable to work with a variety of patient body types and positions from "prone" to "beach chair."



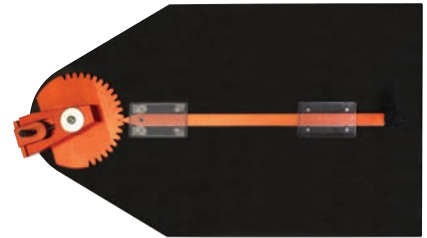
Skytron X-Wide Armboard  
P/N 2-060-06



Multi-Task Armboard  
P/N 2-020-02



Raised Armboard  
P/N 2-020-01-1



Great with  
Skytron  
Beach Chair

# Arm Support - Armboards

Accomplish complete imaging from the tip of the fingers to the heart without any interference using one of Skytron's Carbon Fiber Armboards. Strong and lightweight, they are easy to install and position making them a perfect addition to your table accessories. This is designed for use with our 3000 series tables or our 40" carbon fiber extension.



Pivoting Carbon Fiber Armboard  
P/N 2-060-04



Carbon Fiber Armboard  
P/N 2-060-05





# Arm Support - Arm and Hand Surgery Boards

Flexibility and efficiency are essential in the OR. Keep a level work surface by offsetting the patient's arm weight with Skytron's Carter Hand Surgery table. Gain 360° imageability with our Carbon Fiber Arm Surgery Board. It attaches to Skytron's 3000 series tables and our 40" Carbon fiber extension.



Carbon Fiber Arm Surgery Board  
P/N 2-010-06



Carter Arm Surgery Board  
P/N 2-030-09



Easy to Carry Storage  
Container Includes:  
Case  
Extension  
Traction Bar  
Finger Traps  
Support Rod  
Adjustment Tool

## Traction Weights

SoftGrip™ weights are soft, inexpensive, easy to clean, and color-coded to indicate weight. Grommet at top of weight is ideal for use with the ISI S-hook.



½ lb 2-030-09-5



1 ½ lb 2-030-09-6



2 ½ lb 2-030-09-7



5 lb 2-030-09-8

# Arm Support Matrix

Part Number	2-010-04	2-010-06	2-010-07	2-010-08	2-010-09	2-020-01-1	2-020-02	2-030-09	2-060-04	2-060-05	2-060-06
Item	Radio-lucent Standard Armboard	12" Carbon Fiber Arm Surgery Board	Standard Armboard	Premium Armboard	Premium Locking Armboard	Raised Armboard	Multi-Task Armboard	Carter Arm Surgery Board	Pivoting Carbon Fiber Armboard	Carbon Fiber Armboard (slide under pad)	Skytron X-Wide Armboard
Includes Clamps	Yes Integrated	Yes Integrated	Yes Integrated	Yes Integrated	Yes Integrated	No 6-040-11	No 6-040-11	Yes Integrated	Yes Integrated	N/A	Yes Integrated
Includes Pads	No	No	No	No	No	Yes	Yes	Yes 2"	No	No	No
1602/1700	X		X	X	X	X	X	X		X	X
3000	X*	X	X*	X*	X*	X*	X*	X	X	X	X*
3003/3008	X*	X	X*	X*	X*	X*	X*	X	X	X	X*
3100 A	X		X	X	X	X	X	X		X	X
3500 Series	X	X**	X	X	X	X	X	X	X**	X	X
3600 Series	X	X**	X	X	X	X	X	X	X**	X	X
6000/6001 Series	X		X	X	X	X	X	X		X	X
6002	X		X	X	X	X	X	X		X	X
6300 Series	X	X**	X	X	X	X	X	X	X**	X	X
6500*	X		X	X	X	X	X	X		X	X
6500HD	X		X	X	X	X	X	X		X	X
6600 Series	X	X**	X	X	X	X	X	X	X**	X	X
6700 Series	X	X**	X	X	X	X	X	X	X**	X	X
GS70 Salus	X		X	X	X	X	X	X		X	X
1" Pad Part#						Reference IFU	2-020-02-S	2-030-09-1P/ 2-030-09-1P-E		2-060-05-1S	
2" Pad Part#	2-010-02-2S	2-010-05-2S	2-010-07-2WS	2-010-02-2S	2-010-02-2S			2-030-09-2P/ 2-030-09-2P-E	2-060-01-2S	2-060-05-S	2-060-06-2WS
3" Pad Part#	2-010-02-3S	2-010-05-3S	2-010-07-3WS	2-010-02-3S	2-010-02-3S			2-030-09-3P/ 2-030-09-3P-E	2-060-01-3WS	2-060-05-3S	2-060-06-3P
4" Pad Part#	2-010-02-4S	2-010-05-4S	2-010-07-4WS	2-010-02-4S	2-010-02-4S				2-060-01-4S		2-060-06-4P
5" Pad Part#	2-010-02-5S		2-010-07-5WS	2-010-02-5S	2-010-02-5S				2-060-01-5WS		2-060-06-5P

- X\* Requires 6" Clamp-on Rail (6-070-07)
- X\*\* Requires 40" Carbon Fiber Extension (4-030-40)
- X† Requires Head End Uro Tray Bracket, not compatible with 3603
- X†† Requires Pediatric Table Extension (4-030-42)



# Body Support

Get greater positioning, functionality, and efficiency that covers the spectrum of your clinical needs with our vast selection of accessories and positioning devices. Your Operating Room will be equipped to handle any procedure safely and reliably when the right accessories are combined with your surgical table.



Skytron Beach Chair  
P/N 3-040-32

## Simplified Shoulder Surgery Positioning With the Skytron Beach Chair

Reduce setup times with Skytron Beach Chairs. They are lightweight, easy to install, and increase patient safety. Adjustments to the chair are as simple as pressing a button on your pendant control. This accessory supports up to 600 lb. patients and is compatible with Skytron 3600 and 6700 series tables.



EZ-Lift Assist Beach Chair  
P/N 3-040-30



Get extreme range of motion  
with the Double Ball Joint



Raised Armboard  
P/N 2-020-01-1



10" Foot  
Extension  
P/N 4-030-13



Replacement  
Lateral Brace  
P/N 3-040-20-18

# Body Support - Side Extensions

Create less hassle and stress on the surgeon and staff during a case with our side extensions. Greater access for the surgeon is important, especially for bariatric cases and our wider table top capabilities can achieve those needs. Installation and removal are quick and easy with our spring loaded clamp.

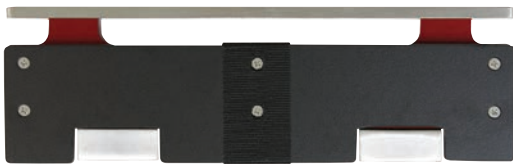
## 5" Side Extensions

Access your patients with ease with the 20" wide Skytron tabletop. This allows surgeons and staff great access without leaning over the patient, reducing fatigue and risk of injury. Larger patients may require a wider table surface. To solve this problem, Skytron offers the 5" table side extension creating a 30" wide tabletop for bariatric patients. The 5" side extension will not slide or lift from the side rail and is compatible with standard clamps, armboards, and stirrups.

Best Seller



5" Side Extension with Release Lever  
P/N 3-060-08



3.5" Side Extension with Release Lever  
P/N 3-060-04



## 3500 & 3600 Series Table Bari-Pad

- 2 Inch - P/N 1-011-12-2
- 3 Inch - P/N 1-011-12-3
- 4 Inch - P/N 1-011-12-4
- 5 Inch - P/N 1-011-12-5

## 6700 Series Table Bari-Pad

- 2 Inch - P/N 1-011-13-2
- 3 Inch - P/N 1-011-13-3
- 4 Inch - P/N 1-011-13-4
- 5 Inch - P/N 1-011-13-5

# Body Support

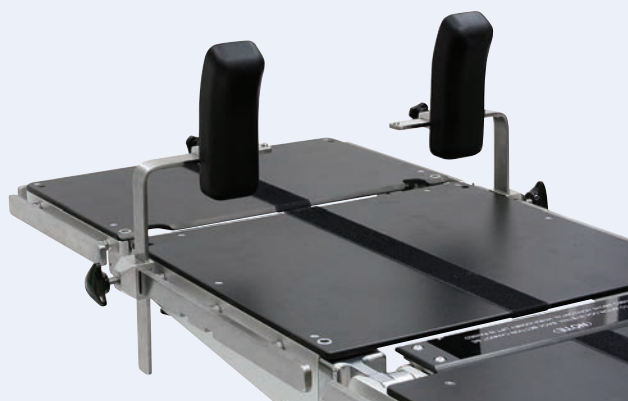
Expand accessibility to your patients during a procedure with the Lower Back Section. Ideal for anesthesiologists, this section gives better access to your patients in tough positions like lower body imaging or lithotomy. Distances can be shortened between the surgeon or staff and the patient with the Lower Back section.

Designed for the Skytron 3600 and 6700 series tables.



Great for  
Anesthesia

Lower Back Section  
P/N 3-040-24



Shoulder Support  
P/N 3-040-01



Chest and Waist Support  
P/N 3-010-01

# Body Support - Foam Positioners

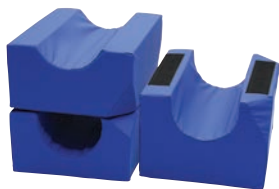
Save plenty of set up time, allow for easier patient repositioning and added safety to your Operating Room using Skytron Foam Positioners.

## Skytron Stacker Lateral Support

Increase patient safety and reduce setup times with the Skytron Stacker Lateral Support. This tool makes setting up for cases go smoothly and efficiently plus they are reusable and reduce waste. Available in standard or bariatric sizes.



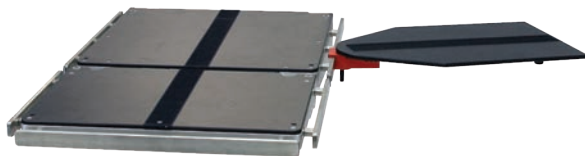
Universal Leg Pad Set  
P/N 4-030-66



Standard Armboard Pad Set  
P/N 2-060-06-PM



Bariatric Armboard Arm Set  
P/N 2-060-06-P



X-Wide Armboard  
P/N 2-060-06



18" Knee Rest  
P/N 4-030-10-B



Prone Positioning Frame (Cloward Saddle)  
P/N 3-070-01 - Standard  
P/N 3-070-01-L - Large

# Body Support Matrix

Part Number	3-040-30	3-040-32	4-030-13	3-010-04	2-060-06-P 2-060-06-PM 4-030-66	3-070-01	4-030-10-B	3-060-04	3-060-08	3-010-01	3-040-01	3-040-24
Item	EZ-Lift Beach Chair	Skytron Beach Chair	10" (254mm) Foot Extension	Lateral Brace for Shoulder Positioners	Skytron Stacker Lateral Support Pad Sets Bariatric, Standard, Leg	Prone Positioning Frame	18" (457mm) Knee Rest	3.5" (89mm) Table Side Extension	5" (127mm) Table Side Extension	Chest & Waist Supports (pr)	Shoulder Support (pr)	Lower Back Section (for split leg)
Includes Clamps	Yes Integrated	N/A	Yes	Yes	N/A	N/A	Yes	N/A	N/A	Yes	Yes	N/A
Includes Pads	Yes 2"	Yes 2"	No	Yes	N/A	N/A	No	No	No	Yes	Yes	No
1602/1700	X		X	X	X,X,X	X	X	X	X	X	X	
3000				X*	X*,X*,X					X*	X*	
3003/3008				X*	X*,X*,X					X*	X*	
3100 A			X	X	X,X,X			X		X	X	
3500 Series	X		X	X	X,X,X	X	X	X	X	X	X	
3600 Series	X	X	X	X	X,X,X	X	X	X	X	X	X	X
6000/6001 Series	X		X	X	X,X,X	X	X	X	X	X	X	
6002	X		X	X	X,X,X	X	X	X	X	X	X	
6300 Series	X		X	X	X,X,X	X	X	X		X	X	
6500*	X		X	X	X,X,X	X	X	X	X	X	X	
6500HD	X		X	X	X,X,X	X	X	X	X	X	X	
6600 Series	X	X	X	X	X,X,X	X	X	X	X	X	X	X
6700 Series	X	X	X	X	X,X,X	X	X	X	X	X	X	X
GS70 Salus	X		X	X	X	X	X			X	X	
1" Pad Part#				3-010-04-1						Reference IFU	Reference IFU	
2" Pad Part#	3-040-31-S	3-040-20-S	4-030-13-2S				4-030-10-2S	3-060-01-2S	3-060-05-2S			1-011-02-21
3" Pad Part#			4-030-13-3SOF				4-030-10-3WS	3-060-02-3S	3-060-05-3S			1-011-02-31
4" Pad Part#			4-030-13-4S				4-030-10-4S	3-060-01-4S	3-060-05-4S			1-011-02-41
5" Pad Part#			4-030-13-5SOF					3-060-02-5S	3-060-05-5S			
X*	Requires 6" Clamp-on Rail (6-070-07)											
X**	Requires 40" Carbon Fiber Extension (4-030-40)											
X†	Requires Head End Uro Tray Bracket, not compatible with 3603											
X††	Requires Pediatric Table Extension (4-030-42)											



# Leg Support

We have the solutions to meet your needs. Skytron provides a variety of choices for patient leg support and positioning. Achieve great surgical access that is otherwise difficult with a standard leg section with our split-leg accessories.

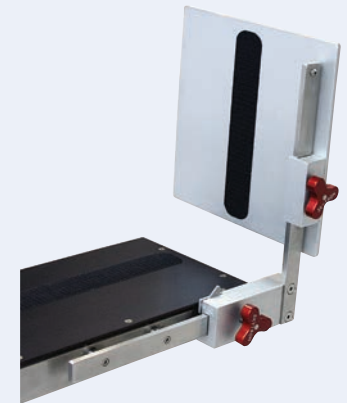


Heavy Duty Split Leg  
P/N 4-030-61

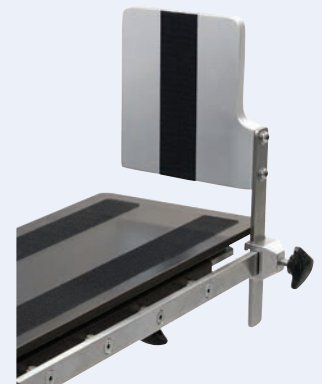
Keep your staff and patients safe at low position levels with the Heavy Duty Split Leg accessory. Ideal for bariatric support, this accessory can support up to a 600 lb. patient on the 3600 series table and helps keep the patient in place without relying entirely on nerve-damaging straps with integrated pelvic tilt seat. It can also provide better patient access for the surgeon.



Universal Split Leg  
P/N 4-030-60



Foot Rest  
P/N 4-030-04



Foot Rest  
P/N 4-030-01



General Tilt Seat  
P/N 3-040-12



# Leg Support Matrix

Part Number	3-040-12	4-030-60	4-030-61	4-030-01	4-030-04
Item	General Tilt Seat	Universal Split Leg	Heavy Duty Split Leg	Foot Rests (pr) Universal Split Leg	Foot Rests (pr) Heavy Duty Split Leg
Includes Clamps	Yes Integrated	Yes	N/A	Yes	Yes Integrated
Includes Pads	No	Yes 2"	No	No	No
1602/1700		X		X	
3000					
3003/3008					
3100 A		X		X	
3500 Series	X	X	X	X	X
3600 Series	X	X	X	X	X
6000/6001 Series		X		X	
6002		X		X	
6300 Series	X	X		X	
6500*		X		X	
6500HD		X	X	X	X
6600 Series	X	X	X	X	X
6700 Series	X	X	X	X	X
GS70 Salus		X		X	X
1" Pad Part#					
2" Pad Part#	3-040-12-2WS	4-030-60-2SL 4-030-60-2SR	4-030-61-S	4-030-01-2S	4-030-04-2S
3" Pad Part#	3-040-12-3WS	4-030-60-3SL 4-030-60-3SR	4-030-61-3S	4-030-01-3SOF	
4" Pad Part#	3-040-12-4WS	4-030-60-4SL 4-030-60-4SR	4-030-61-4S		
5" Pad Part#	3-040-12-5WS	4-030-60-5LSOF 4-030-60-5RSOF	4-030-61-5S		
X*	Requires 6" Clamp-on Rail (6-070-07)				
X**	Requires 40" Carbon Fiber Extension (4-030-40)				
X†	Requires Head End Uro Tray Bracket, not compatible with 3603				
X††	Requires Pediatric Table Extension (4-030-42)				

# Leg Support - Transfer Boards

Reduce fatigue and produce higher turnaround with our lightweight and easy to install Hyper Light Leg Section. Weighing less than six pounds, removing and attaching sections is easier on staff and creates less strain on the body. Alternatively, Skytron also offers a variety of transfer boards that are light weight and reduce the strain of lithotomy positioning.

Only 5.45 Pounds



Hyperlight Leg Section  
P/N 4-030-43

Optional Transfer Board  
P/N 4-030-44



Transfer Board (Pin Type)  
P/N 4-030-20

Transfer Board  
(Leg Pin Type)  
P/N 4-030-22



Transfer Board (Side Rail Type)  
P/N 4-030-18

# Leg Support - Stirrups

Keep patients safe while working at a higher weight capacity with the ability to perform simple leg repositioning. The Flex Fit 2 Stirrups are designed with the patient and surgical team in mind.



Levigator Stirrups  
P/N 4-090-03-1  
Heavy Duty Levigator Stirrups  
P/N 4-090-03-1HD



Lithotomy Stirrups  
P/N 4-020-02-4



Flex Fit 2 Stirrups  
P/N 4-090-16

New Product

## New Products



Versa Fit Stirrups  
P/N 4-090-17  
**Must order boots separately**



Standard Boot  
P/N 4-090-17-1  
Pads Included



Elite Boot  
P/N 4-090-17-2  
Pads Included



Bariatric Boot  
P/N 4-090-17-3  
Pads Included

# Leg Support - Stirrups

Simple, three-step setup process for urology and gynecological procedures.



# Leg Support Positioners/Transfer Boards Matrix

Part Number	4-020-02-4	4-090-03-1	4-090-03-1HD	4-090-16	4-090-17	4-030-18	4-030-20	4-030-22	4-030-43	4-030-44
Item	Lithotomy Stirrups	Levigator III Stirrups	Heavy Duty Levigator III Stirrups	Flex Fit 2	Versa Fit	Transfer Board (side rail type)	Transfer Board (pin type)	Transfer Board (leg pin type)	Hyperlight Leg Section	Hyperlight Transfer Board
Includes Clamps	No 6-040-11	No	No	Yes	Yes	N/A	N/A	N/A	Yes Integrated	Yes Integrated
Includes Pads	Yes	Yes	Yes	Yes	No	N/A	N/A	No	No	No
1602/1700	X	X	X	X	X	X	X			
3000										
3003/3008										
3100 A	X	X	X	X	X	X				
3500 Series	X	X	X	X	X	X		X	X	X
3600 Series	X	X	X	X	X	X		X	X	X
6000/6001 Series	X	X	X	X	X	X	X			
6002	X	X	X	X	X	X	X			
6300 Series	X	X	X	X	X	X	X	X	X	X
6500*	X	X	X	X	X	X	X	X		
6500HD	X	X	X	X	X	X	X	X		
6600 Series	X	X	X	X	X	X	X	X	X	X
6700 Series	X	X	X	X	X	X	X	X	X	X
GS70 Salus	X	X	X	X	X	X				
1" Pad Part#	4-020-02-1	4-090-03-14	4-090-03-2HD	4-090-16-2	Versa Fit Standard Pad 4-090-17-4 Versa Fit Elite Pad 4-090-17-5 Versa Fit HD Pad 4-090-17-6					
2" Pad Part#								4-030-22-2S	4-030-43-2WS	4-030-44-2WS
3" Pad Part#								4-030-22-3S	4-030-43-3WS	4-030-44-3WS
4" Pad Part#								4-030-22-4S	4-030-43-4WS	4-030-44-4WS
5" Pad Part#									4-030-43-5WS	4-030-44-5WS

X\* Requires 6" Clamp-on Rail (6-070-07)  
 X\*\* Requires 40" Carbon Fiber Extension (4-030-40)  
 X† Requires Head End Uro Tray Bracket, not compatible with 3603  
 X†† Requires Pediatric Table Extension (4-030-42)

# Urology

Optimize your urology options with easily accessible imaging windows, high weight capacities, and long-lasting durability.



**Head End Urology Tray Brackets**  
 P/N 4-040-06-1 For Type "A" Urology Tray  
 P/N 4-040-06-3 For Type "B" Urology Tray



**KUB Board**  
 P/N 4-040-09-7



**Urology Bracket Set**  
 P/N 4-040-18  
 P/N 4-040-14-1 Sterile Pouch (each)  
 P/N 4-040-14-10 (Pkg. of 10)



**Urology Drain Tray**  
 P/N 4-040-03 Type "A"



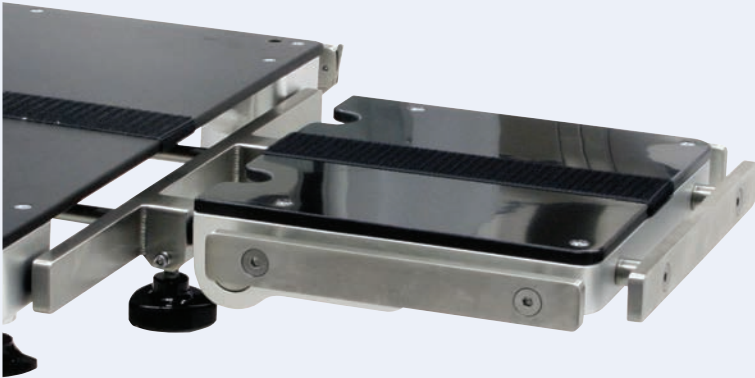
**Urology Drain Tray**  
 P/N 4-040-05 Type "B"

**Urology Drain Tray**  
 P/N 4-040-07



# Head Support

Attach your Mayfield™ head support with ease using the Skytron Neurology Adapter. This adapter's versatility provides mounting points for your current Mayfield™ head support. We also offer a variety of narrow and general-purpose head supports for your ENT cases.



Narrow Head Section  
P/N 7-010-07



Neurology Adapter  
P/N 7-010-02-B



General Purpose Head Support  
P/N 7-010-01

# Urology/Head Support Matrix

Part Number	4-040-03	4-040-05	4-040-06-1	4-040-06-3	4-040-07	4-040-09-7	4-040-18	7-010-01	7-010-02-B	7-010-07	7-010-08
Item	Uro Drain Tray	Uro Drain Tray	Head End Uro Tray Bracket	Head End Uro Tray Bracket	Uro Drain Tray	KUB Board	Skytron Urology Bracket	General Purpose Head Support	Neuro Adapter B-Series	Narrow Head Section	Silhouetted Narrow Head Section
Includes Clamps	N/A	N/A	N/A	N/A	N/A	N/A	Yes Integrated	N/A	N/A	N/A	N/A
Includes Pads	N/A	N/A	N/A	N/A	N/A	No	N/A	Yes	N/A	No	Yes 2"
1602/1700	X†		X				X	X	X	Only 1700	X
3000											
3003/3008											
3100 A		X					X				
3500 Series						X	X	X	X	X	X
3600 Series					X‡	X	X	X	X	X	X
6000/6001 Series	X†		X				X	X	X	X	X
6002	X†		X				X	X	X	X	X
6300 Series	X†		X			X	X	X	X	X	X
6500*	X†		X			X	X	X	X	X	X
6500HD	X†		X			X	X	X	X	X	X
6600 Series	X†		X			X	X	X	X	X	X
6700 Series	X†		X			X	X	X	X	X	X
GS70 Salus							X	X	X	X	X
1" Pad Part#											
2" Pad Part#						4-040-09-1S				7-010-03-2S	7-010-08-2S
3" Pad Part#						4-040-09-3S					7-010-08-3S
4" Pad Part#						4-040-09-4SW				7-010-03-4S	7-010-08-4S
5" Pad Part#											7-010-08-5S

- X\* Requires 6" Clamp-on Rail (6-070-07)
- X\*\* Requires 40" Carbon Fiber Extension (4-030-40)
- X† Requires Head End Uro Tray Bracket, not compatible with 3603
- X†† Requires Pediatric Table Extension (4-030-42)
- X‡ Not compatible with 3603

# Clamps

Whether you need to clamp rounded or flat bar accessories, add a side rail to your various extensions, or upgrade from your old "Clark Socket" style clamps, Skytron has the options to meet your needs.

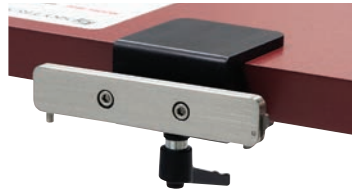


Schure Socket  
P/N 6-040-11



Skytron Stirrup Clamp  
P/N 6-030-08  
P/N 6-030-08-EU

Easy to install and with less risk of clamps moving out of place, the Skytron Schure Socket XL and Skytron Stirrup clamps are a great addition to your table accessories. These clamps have the flexibility to be effortlessly installed anywhere on the table side rail.



6" Clamp-On Rail  
P/N 6-070-07



Clamp-On Rail for Pediatric Extension  
P/N 4-030-42-9



12" Clamp-On Rail  
P/N 6-070-07-3



Tri-Clamp  
P/N 6-040-03



Universal Side-Rail Clamp II  
P/N 6-040-12



EZ Grip Bar Clamp  
P/N 6-030-05-1



Bar Clamp - Standard  
P/N 6-030-01



Standard Bar Clamp  
P/N 6-040-10

# Extensions

Surgical and imaging access is the key to success in the Operating Room. Achieve the best patient positioning and access with our Skytron extensions. OR Staff gets better access to smaller patients with the Pediatric extension, which along with the 40" extension, provides a 360° range of imaging flexibility.

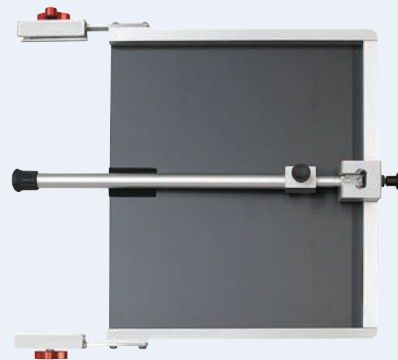
360° Imaging



Carbon Fiber Extension  
P/N 4-030-40



Pediatric Table Extension  
P/N 4-030-42



18" Foot Extension  
P/N 4-030-12-HD

# Extensions/Clamps Matrix

Part Number	4-030-12-HD	4-030-40	4-030-42	4-030-42-9	6-030-08	6-030-01	6-030-05-1	6-040-03	6-040-10	6-040-11	6-040-12	6-070-07 6-070-07-3
Item	18" (457mm) Extension with Support Rod	40" (1016mm) Carbon Fiber Extension	Pediatric Table Extension	Clamp on Rail for Pediatric Extension	Skytron Stirrup Clamp	Bar Clamp (standard)	EZ Grip Bar Clamp	Tri Clamp 5/8" (16mm)	Standard Bar Clamp 5/8" (16mm)	Schure Socket XL	Universal Side Rail Clamp II	6" & 12" (152/305mm) Clamp-On Rail
Includes Clamps	Yes Integrated	N/A	N/A	Yes Integrated	N/A	N/A	N/A	N/A	N/A	N/A	N/A	N/A
Includes Pads	No	No	No	N/A	N/A	N/A	N/A	N/A	N/A	N/A	N/A	N/A
1602/1700	X				X	X	X	X	X	X	X	
3000					X*	X*	X*	X*	X*	X*		X
3003/3008					X*	X*	X*	X*	X*	X*	X	X
3100 A	X				X	X	X	X	X	X	X	
3500 Series	X	X	X	X††	X	X	X	X	X	X	X	X**
3600 Series	X	X	X	X††	X	X	X	X	X	X	X	X**
6000/6001 Series	X				X	X	X	X	X	X	X	
6002	X				X	X	X	X	X	X	X	
6300 Series	X	X	X	X††	X	X	X	X		X	X	X**
6500*	X		X	X††	X	X	X	X	X	X	X	
6500HD	X		X	X††	X	X	X	X	X	X	X	
6600 Series	X	X	X	X††	X	X	X	X	X	X	X	
6700 Series	X	X	X	X††	X	X	X	X	X	X	X	X**
GS70 Salus	X			X	X	X	X	X	X	X	X	
1" Pad Part#												
2" Pad Part#	4-030-10-2WS	4-030-40-2S	4-030-42-2WS									
3" Pad Part#	4-030-10-3WS	4-030-40-3S										
4" Pad Part#	4-030-10-4WS	4-030-40-4S										
5" Pad Part#	4-030-10-5WS											

- X\* Requires 6" Clamp-on Rail (6-070-07)
- X\*\* Requires 40" Carbon Fiber Extension (4-030-40)
- X† Requires Head End Urology Tray Bracket, not compatible with 3603
- X†† Requires Pediatric Table Extension (4-030-42)

# Straps

No matter the range of needs in your Operating Room, Skytron straps have you covered. Choose from Velcro, single buckle, dual buckle, wide, narrow, long, or short strap options.



72" Nylon Restraint Belt  
P/N 6-010-57



74" Patient Security Straps  
P/N 6-010-56



# Straps



96" Restraint Strap  
P/N 6-010-41-B



105" Restraint Strap  
P/N 6-010-41-X



75" Patient Safety Strap  
P/N 6-010-50



65" Restraint Strap  
P/N 6-010-52-1



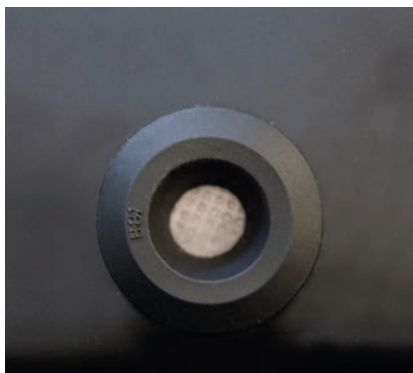
90" Restraint Strap  
P/N 6-010-41-VE

# Table Pads

Keep pressure management in check with a high-quality three-layer table pad. Provide comfort to your patients with the soft cradling viscous memory foam. Skytron Table Pads are easy to clean with leak-proof seams. Sizes available from two to five inches thick.



Reduce costs spent on table pad replacements with the Welded Seam Pad. Liquids are prevented from entering the inner foam layers thanks to the adhesive and heat formula creating a closed seam “weld”.



Each Welded Seam Pad has a vent located on the side of the pad. This vent allows air to enter or leave the pad while preventing fluid ingress so that foam can expand and contract.



Welded Pad with “welded” seams

See the Table Accessories Matrix to find Part Numbers and determine which pad set is needed for individual Skytron tables.

3” Welded Seam Pad shown.

Top Cover: Fusion Synergy Conductive Urethane Coating



1” (25.4mm) Viscoelastic

1-1/2” (38.1mm) Foam

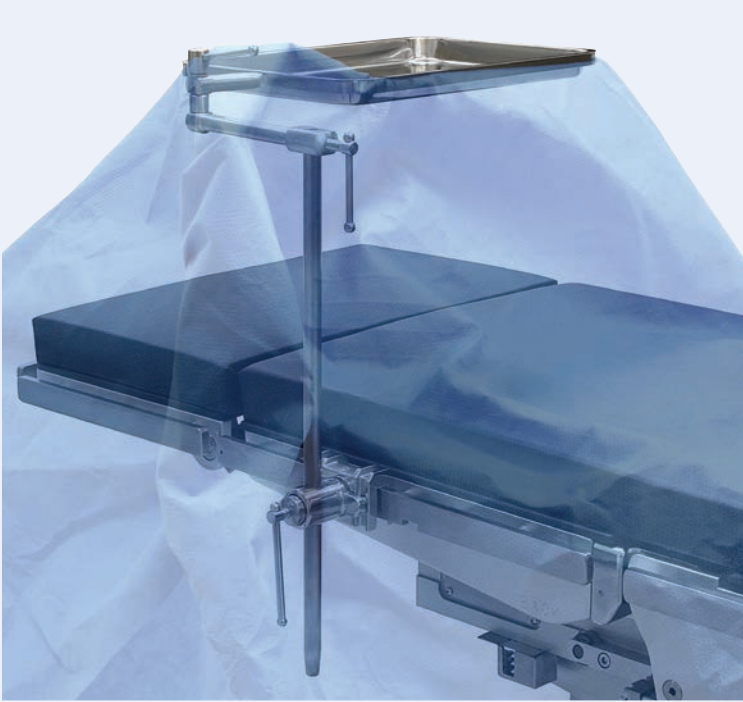
1/2” (25.4mm) Closed Cell Foam

Bottom Cover: Fusion Synergy Conductive Urethane Coating

The exterior of Welded Seam Pads are treated with Triclosan, an antimicrobial agent.

# General Accessories

Optimize greater positioning and functionality in your Operating Room. Our vast selection of accessories and positioning devices can fit your specific needs. Your OR will be equipped to handle any procedure when the right accessories are combined with your Skytron table.



Instrument Tray  
P/N 6-060-01



Anesthesia Screen "Wing" Type  
P/N 6-020-03



Sterile Joystick Cover  
P/N 9-020-21-1

# General Accessories



OB Hand Grips  
P/N 2-050-01



Disposable Face Mask  
P/N 3-040-33-1



Head & Chin Straps  
P/N 3-040-22



# General Accessories Matrix



## ACCESSORY CARTS

Please contact your local distributor for Accessory Cart Part Numbers.



Part Number	2-050-01	6-020-03	6-020-09	6-060-01
Item	OB Hand Grips	Anesthesia Screen "Wing" Type	Catheter Extension	Instrument Tray
Includes Clamps	Yes	Yes	N/A	No
Includes Pads	N/A	N/A	N/A	N/A
1602/1700	X	X		X
3000	X*	X*		X*
3003/3008	X*	X*	X	X*
3100 A	X	X		X
3500 Series	X	X		X
3600 Series	X	X		X
6000/6001 Series	X	X		X
6002	X	X		X
6300 Series	X	X		X
6500*	X	X		X
6500HD	X	X		X
6600 Series	X	X		X
6700 Series	X	X		X
GS70 Salus	X	X	X	X
1" Pad Part#				
2" Pad Part#				
3" Pad Part#				
4" Pad Part#				
5" Pad Part#				

X\* Requires 6" Clamp-on Rail (6-070-07)

X\*\* Requires 40" Carbon Fiber Extension (4-030-40)

X† Requires Head End Uro Tray Bracket, not compatible with 3603

X†† Requires Pediatric Table Extension (4-030-42)

# Replacement Pendant Controls



## 3000 Series Pendant Control

3000 Replacement Pendant Control  
Pendant P/N U-D1-065-01-2  
Cord Assembly P/N D5-034-18-1

3001 Replacement Pendant Control  
Pendant P/N U-D5-065-01-2  
Cord Assembly P/N D5-035-12

3002 Replacement Pendant Control  
Pendant P/N U-D5-066-01-2  
Cord Assembly P/N D5-066-03

3003 Replacement Pendant Control  
Pendant P/N U-D5-066-01-3  
Cord Assembly P/N D5-066-03

## 3500 Series Pendant Control

3500 Replacement Pendant Control  
Pendant P/N U-D5-035-02-2

3500B Replacement Pendant Control  
Pendant P/N U-D5-035-17-2  
Cord Assembly P/N D5-035-18-1

3501B Replacement Pendant Control  
Pendant P/N U-D5-035-18-2  
Cord Assembly P/N D5-035-18-1

3501C Replacement Pendant Control  
Pendant P/N U-D5-035-18-2  
Cord Assembly P/N D5-035-18-1

3503 Replacement Pendant Control  
Pendant P/N U-D5-035-01-3-1  
Cord Assembly P/N M001962A

## 3600 Series Pendant Control

3600B and 3602 Replacement Pendant Control  
Pendant P/N U-D5-035-01-2  
Cord Assembly P/N D5-034-18

3603 Replacement Pendant Control  
Pendant P/N U-D5-035-01-3  
Cord Assembly P/N M001962A





# Replacement Pendant Controls



## 6000 Series Pendant Control

6001 Replacement Pendant Control  
Pendant P/N U-D5-031-63-2

6001NB Replacement Pendant Control  
Pendant P/N U-D5-031-65-2

## 6300 Series Pendant Control

6300 Series Replacement Pendant Control  
Pendant P/N U-D5-063-01-2  
Cord Assembly P/N D5-034-18

## 6500 Series Pendant Control

6500NB Replacement Pendant Control  
Pendant P/N U-D5-032-46-2

## 6700 Series Pendant Control

6700B/ 6701/6702 Replacement Pendant Control  
Pendant P/N U-D5-067-16-2  
Cord Assembly P/N D5-034-18

## 6600 Series Pendant Control

6600 Replacement Pendant Control  
Pendant P/N U-D5-034-01-2  
Cord Assembly P/N D5-034-18

6600B Replacement Pendant Control  
Pendant P/N U-D5-034-03-2  
Cord Assembly P/N D5-034-18

## GS70 Series Pendant Control

GS70 Replacement Pendant Control  
Pendant P/N SWB0340  
Cord Assembly P/N M001947



# Guardian Series Accessories

G-Series table accessories are our newest table attachments and are compatible with Skytron's brand new line of Guardian table models. Compliment your Operating Room with unmatched imaging length and surgical access with the 44" carbon fiber extension. G-Series accessories provide greater safety when the accessory attaches in place of the table's leg section and will communicate with the table to eliminate collisions.

## 44" Carbon Fiber Extension

P/N 4-031-01

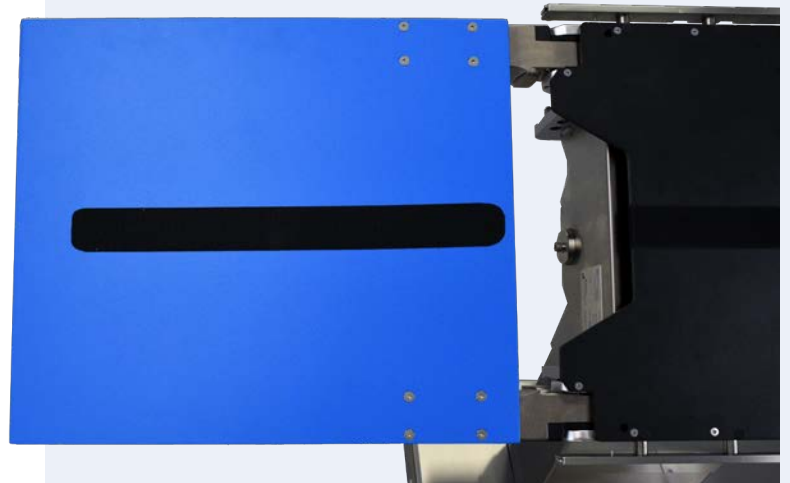
The 44" extension provides unmatched imaging and surgical access all while maintaining an 800 lb. patient capacity.



## Light Weight Leg Section

P/N 4-031-02

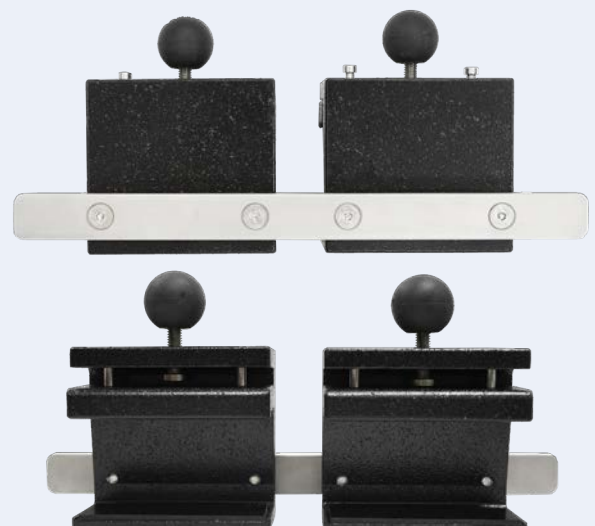
The lightweight leg section provides an alternative to the standard leg section which is lighter and easier to take on and off. This accessory is most useful for constant lithotomy positioning when the leg section is regularly removed and reinstalled.



## Guardian Series Clamp

P/N 4-031-01-C

Easy to install and less risk of clamps moving out of place with the Guardian Series Clamp. This clamp can be used on all extensions *except* the Pediatric Extension.

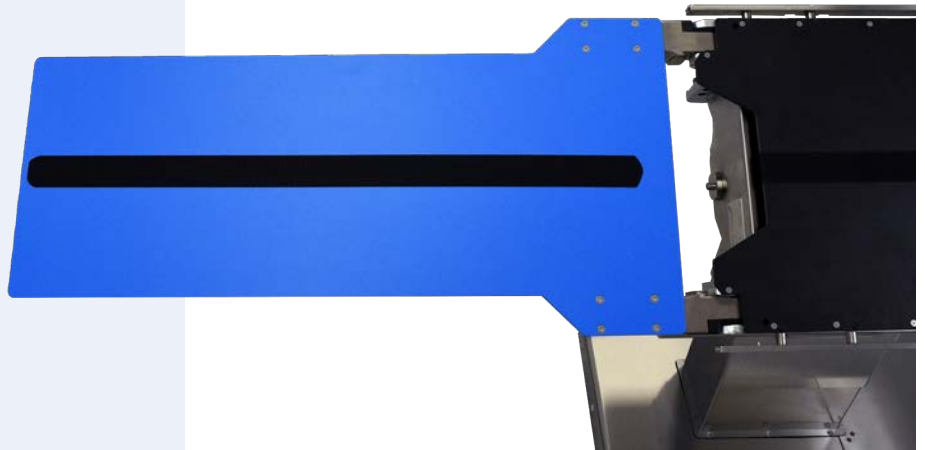


# Guardian Series Accessories

## Pediatric Extension

PN 4-031-03

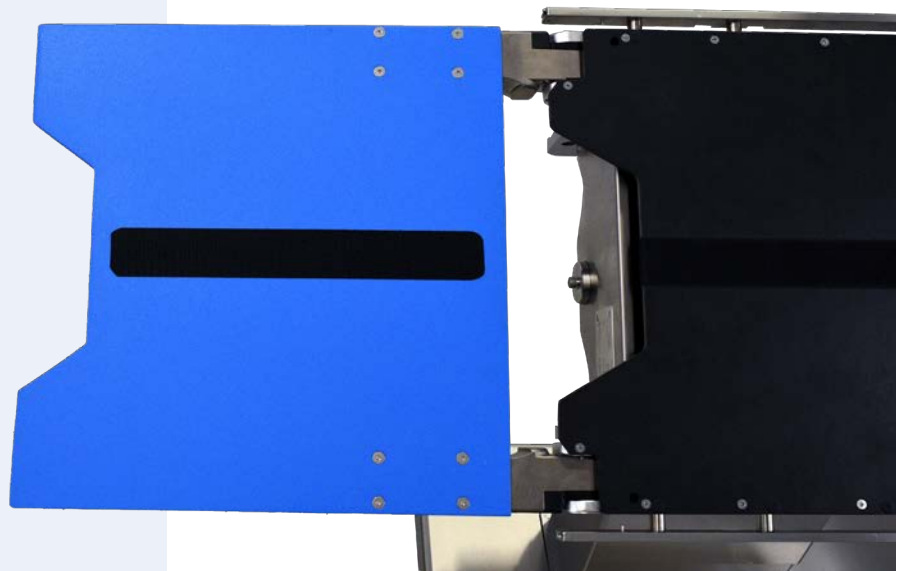
Eliminate offsetting patients or poor posture by leaning over the table. The pediatric extensions provide direct access to smaller patients. At 15" wide this extension provides great access from either side for your smallest patients.



## Kidney Ureter Bladder - KUB

P/N 4-041-01

The Kidney Ureter Bladder board provides additional imaging length and width while the carbon fiber allows for 360° of imaging making oblique c-arm imaging easy.

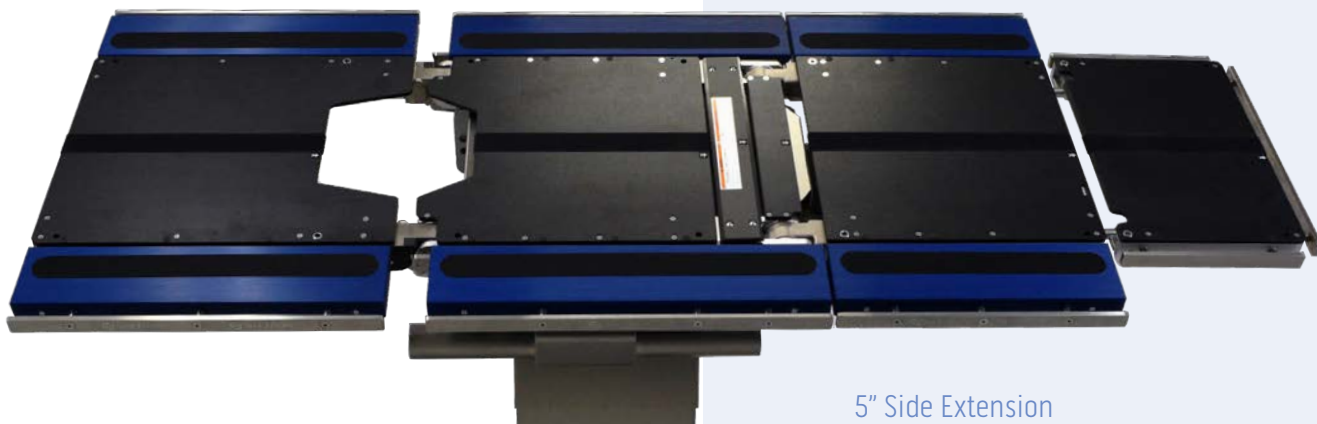


# Guardian Series Accessories

## Split Leg

P/N GS70-2

Take the work out of adjusting leg extensions. Powered by the table itself, the split leg integrates perfectly with G-Series tables. The split leg works independently or in unison by raising or lowering each leg using the power of the table.



## 5" Side Extension

P/N 3-060-09

The 5" table side extensions will not slide or lift from the table side rails and lock firmly in place. They will provide a 30" working surface to meet bariatric needs.

# Guardian Series Accessories

## GS70 Beach Chair

P/N 3-041-01

Reduce setup times with Skytron Beach Chairs. They are lightweight, easy to install, and increase patient safety. Adjustments to the chair are as simple as pressing a button on your pendant control. This accessory is compatible with Skytron GS70 Table only.



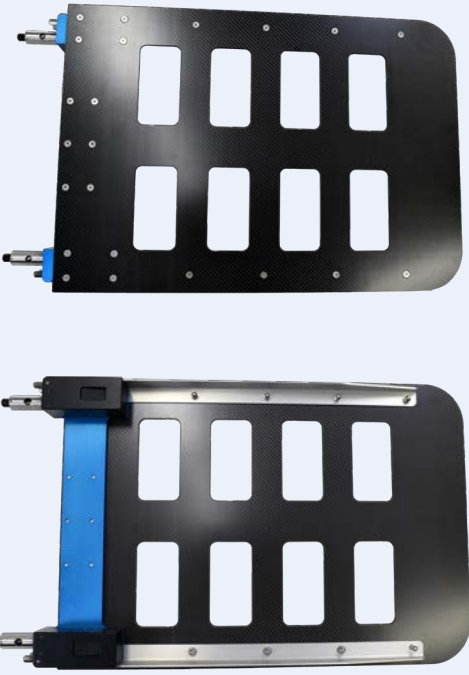
# Guardian Series Accessories



**Lower Back Section**  
P/N 3-041-03  
Achieve better access to your patients in tough positions like lower body imaging or lithotomy with our lightweight Lower Back Section.



**Transfer Board**  
P/N 4-031-04  
Removing and attaching heavy sections can cause stress on the body. Reduce fatigue and produce higher turnaround with our lightweight and easy to install Transfer Boards.





# Guardian Series Accessories Pad Matrix

Part Number	GS70-2	4-031-01	4-031-02	4-031-03	4-041-01	3-041-01	3-060-09	3-041-03	4-031-04
Item	Split Leg	44" Carbon Fiber Table Extension Pad	Light Weight Leg Section Pad	Pediatric Extension Pad	KUB Board Pad	GS70 Beach Chair	5" Side Extension	Lower Back Section	Transfer Board
Includes Clamps									
Includes Pads									
1602/1700									
3000									
3003/3008									
3100 A									
3500 Series									
3600 Series									
6000/6001 Series									
6002									
6300 Series									
6500									
6500HD									
6600 Series									
6700 Series									
GS70 Salus	X	X	X	X	X	X	X	X	X
1" Pad Part#									
2" Pad Part#	1-011-06-24	4-031-01-2WS	4-031-02-2WS	4-031-03-2WS	4-041-01-2WS		1-011-12-2		
3" Pad Part#	1-011-06-34	4-031-01-3WS	4-031-02-3WS	4-031-03-3WS	4-041-01-3WS		1-011-12-3		
4" Pad Part#	1-011-06-44	4-031-01-4WS	4-031-02-4WS	4-031-03-4WS	4-041-01-4WS		1-011-12-4		
5" Pad Part#	1-011-06-54	4-031-01-5WS	4-031-02-5WS	4-031-03-5WS	4-041-01-5WS		1-011-12-5		

X\* Requires 6" Clamp-on Rail (6-070-07)  
X\*\* Requires 40" Carbon Fiber Extension (4-030-40)  
X† Requires Head End Uro Tray Bracket, not compatible with 3603  
X†† Requires Pediatric Table Extension (4-030-42)

# Skytron's Solutions



## Sterile Processing

Processing Sinks and Stainless Offerings  
Washers, Ultrasonics, and Cart Washers  
Prep & Pack Tables & Sterilizers



## Clinical

Surgical Tables  
Booms & Lights  
Full Offering of Stainless Products



## Architectural & Environmental

Modular Walls  
Configurable Window and Door Offerings  
Built-in Cabinetry



## Clinical Business Intelligence

Video Integration  
Asset Tracking & Supply Chain Solutions  
Surgical Displays

Skytron provides safe and efficient healthcare solutions delivered through a local representative network that values long-term relationships and comprehensive service.

Focused on providing the highest quality solutions while delivering the lowest cost of ownership, we prioritize transparency and accountability in our actions.

**To learn more, visit our website at [www.skytron.com](http://www.skytron.com)**



5085 Corporate Exchange Blvd. SE  
Grand Rapids, MI 49512  
1.800.SKYTRON (759-8766)  
email: [info@skytron.com](mailto:info@skytron.com)  
[www.skytron.com](http://www.skytron.com)



REV 14 03-24  
PN L2-010-17